

Interviewing: June 2 - 5, 2016  
Sample: 2000 Adults nationwide online  
1396 registered voters nationwide online



# *The Economist/YouGov* Poll

## Weekly Tracking

For immediate release

**1. Approval of Obama as President – Historical**

Do you approve or disapprove of the way Barack Obama is handling his job as President?

	All Adults						
	Total Approve	Total Disapprove	Strongly Approve	Somewhat Approve	Somewhat Disapprove	Strongly Disapprove	Not Sure
June 3-7, 2016	46%	48%	22%	24%	16%	32%	6%
May 20-24, 2016	47%	48%	20%	27%	14%	34%	6%
May 6-10, 2016	47%	49%	21%	26%	14%	35%	5%
April 23-25, 2016	47%	47%	21%	26%	13%	34%	6%
April 9-11, 2016	47%	51%	22%	25%	13%	38%	3%
March 26-28, 2016	48%	48%	23%	25%	12%	36%	4%
March 12-14, 2016	47%	49%	22%	25%	14%	35%	3%
February 27-29, 2016	46%	50%	21%	25%	13%	37%	4%
February 13-15, 2016	45%	49%	19%	26%	12%	37%	7%
January 30-February 1, 2016	43%	51%	21%	22%	15%	36%	5%
One Year Ago	43%	54%	16%	27%	18%	36%	3%

	Registered Voters						
	Total Approve	Total Disapprove	Strongly Approve	Somewhat Approve	Somewhat Disapprove	Strongly Disapprove	Not Sure
June 3-7, 2016	46%	52%	22%	24%	13%	39%	3%
May 20-24, 2016	45%	52%	22%	23%	13%	39%	3%
May 6-10, 2016	46%	52%	22%	24%	12%	40%	2%
April 23-25, 2016	45%	51%	22%	23%	11%	40%	4%
April 9-11, 2016	45%	53%	23%	22%	10%	43%	2%
March 26-28, 2016	46%	51%	24%	22%	11%	40%	3%
March 12-14, 2016	44%	54%	23%	21%	13%	41%	2%
February 27-29, 2016	44%	54%	22%	22%	10%	44%	2%
February 13-15, 2016	43%	55%	22%	21%	12%	43%	2%
January 30-February 1, 2016	42%	56%	21%	21%	12%	44%	1%
One Year Ago	42%	55%	18%	24%	15%	40%	2%

## Obama Approval

"Do you approve or disapprove of the way Barack Obama is handling his job as President?"

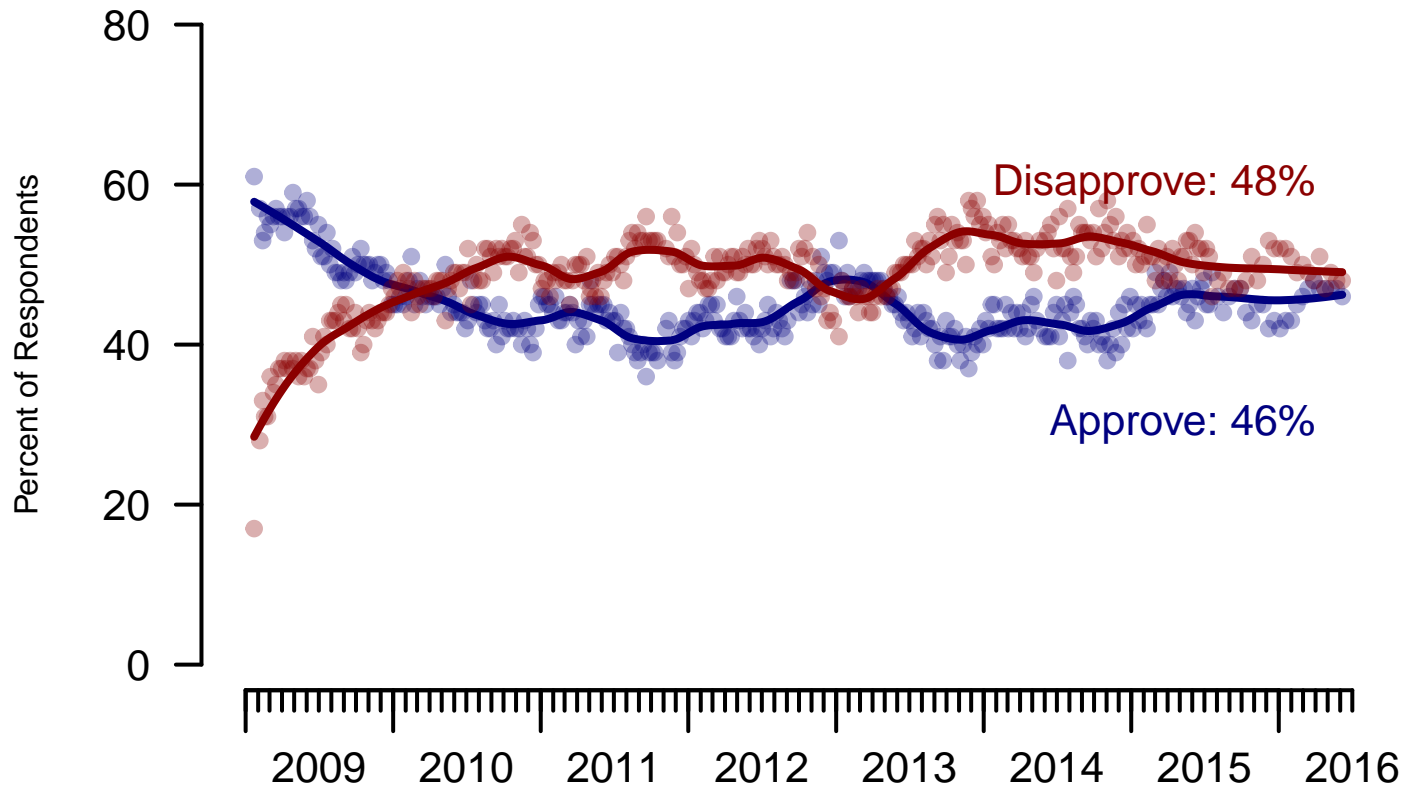


Figure 1: Obama Approval – All Adults

## Obama Approval

"Do you approve or disapprove of the way Barack Obama is handling his job as President?"

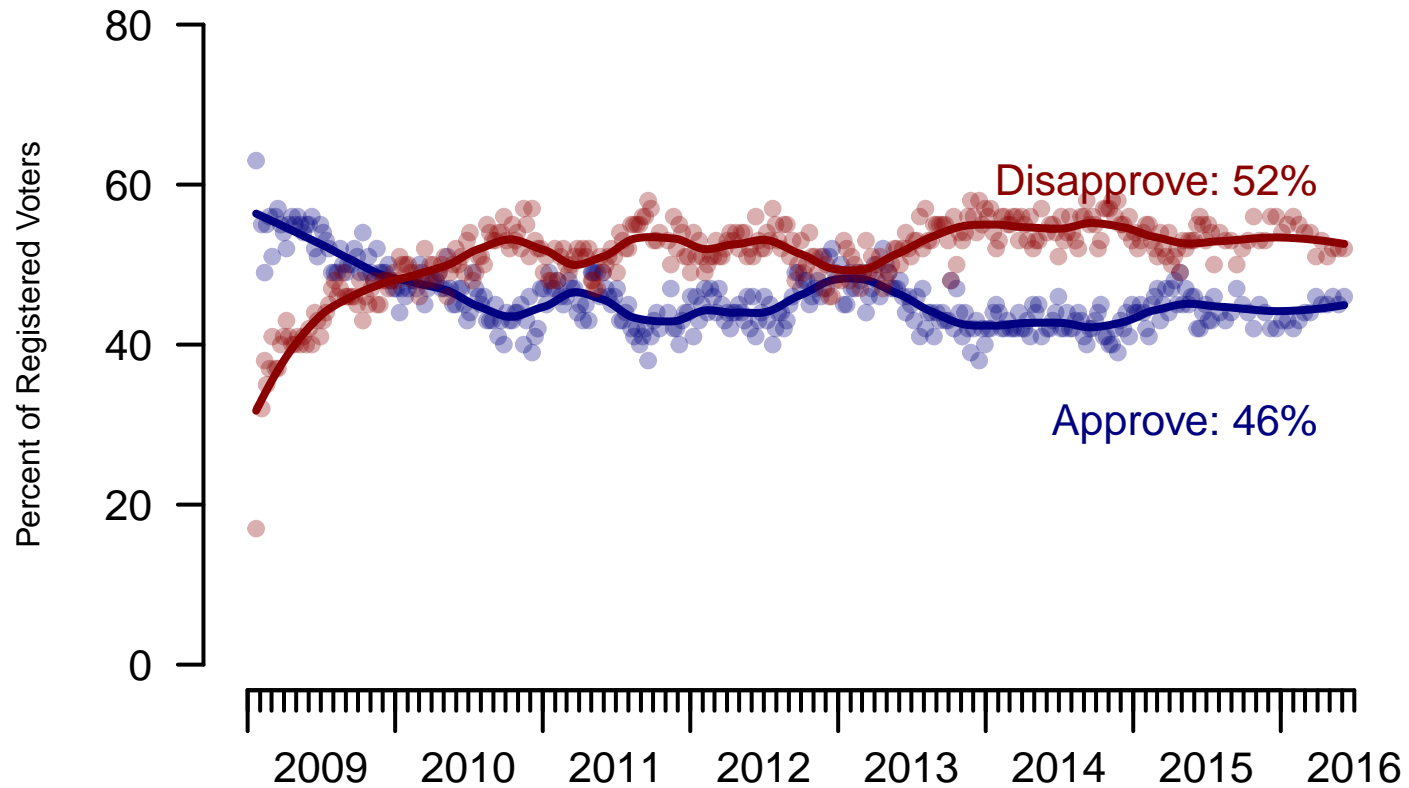


Figure 2: Obama Approval – Registered Voters

**2. Approval of Obama as President – This Week – All Adults**

Do you approve or disapprove of the way Barack Obama is handling his job as President?

	Age (4 category)					Race			Census Region			
	Total	Under 30	30-44	45-64	65+	White	Black	Hispanic	North-east	Mid-west	South	West
Strongly Approve	22%	22%	28%	19%	20%	17%	43%	29%	25%	16%	23%	23%
Somewhat Approve	24%	34%	23%	22%	20%	23%	29%	28%	23%	27%	23%	25%
Somewhat Disapprove	16%	16%	16%	18%	13%	17%	8%	19%	16%	13%	15%	21%
Strongly Disapprove	32%	16%	26%	37%	45%	39%	8%	14%	30%	40%	34%	24%
Not Sure	6%	12%	7%	4%	1%	4%	12%	10%	5%	5%	5%	8%
Totals (Unweighted N)	100% (2,000)	100% (391)	100% (521)	100% (764)	100% (324)	100% (1,538)	100% (241)	100% (221)	100% (376)	100% (436)	100% (750)	100% (438)

	Party ID			Ideology			Gender		Family Income (3 category)			Prefer not to say	
	Total	Dem	Ind	Rep	Lib	Mod	Con	Male	Female	Under 50	50-100		100+
Strongly Approve	22%	41%	19%	2%	39%	21%	10%	19%	24%	21%	21%	22%	25%
Somewhat Approve	24%	36%	25%	8%	40%	28%	10%	24%	24%	24%	21%	33%	24%
Somewhat Disapprove	16%	11%	19%	18%	9%	20%	17%	18%	15%	18%	18%	10%	10%
Strongly Disapprove	32%	6%	29%	70%	6%	22%	60%	34%	31%	30%	37%	34%	31%
Not Sure	6%	5%	8%	3%	5%	9%	3%	5%	6%	7%	3%	2%	11%
Totals (Unweighted N)	100% (2,000)	100% (723)	100% (755)	100% (522)	100% (521)	100% (866)	100% (613)	100% (968)	100% (1,032)	100% (1,049)	100% (516)	100% (212)	100% (223)

**3. Approval of U.S. Congress – Historical**

Overall, do you approve or disapprove of the way that the United States Congress is handling its job?

All Adults

	<b>Total Approve</b>	<b>Total Disapprove</b>	Strongly Approve	Somewhat Approve	Neutral	Somewhat Disapprove	Strongly Disapprove	Not Sure
June 3-7, 2016	12%	62%	4%	8%	18%	24%	38%	8%
May 20-24, 2016	12%	60%	3%	9%	17%	21%	39%	11%
May 6-10, 2016	10%	61%	2%	8%	18%	20%	41%	10%
April 23-25, 2016	12%	58%	3%	9%	18%	20%	38%	12%
April 9-11, 2016	12%	61%	3%	9%	17%	21%	40%	10%
March 26-28, 2016	13%	60%	2%	11%	18%	22%	38%	10%
March 12-14, 2016	13%	58%	4%	9%	20%	22%	36%	10%
February 27-29, 2016	11%	58%	3%	8%	20%	23%	35%	11%
February 13-15, 2016	12%	58%	3%	9%	18%	22%	36%	12%
January 30-February 1, 2016	12%	59%	3%	9%	18%	23%	36%	11%
One Year Ago	13%	61%	3%	10%	19%	26%	35%	7%

Registered Voters

	<b>Total Approve</b>	<b>Total Disapprove</b>	Strongly Approve	Somewhat Approve	Neutral	Somewhat Disapprove	Strongly Disapprove	Not Sure
June 3-7, 2016	9%	69%	2%	7%	16%	25%	44%	6%
May 20-24, 2016	12%	67%	3%	9%	15%	24%	43%	6%
May 6-10, 2016	10%	70%	2%	8%	15%	23%	47%	6%
April 23-25, 2016	11%	66%	3%	8%	14%	22%	44%	8%
April 9-11, 2016	11%	70%	3%	8%	13%	24%	46%	5%
March 26-28, 2016	13%	66%	3%	10%	15%	23%	43%	6%
March 12-14, 2016	12%	65%	3%	9%	16%	24%	41%	6%
February 27-29, 2016	10%	67%	2%	8%	17%	25%	42%	6%
February 13-15, 2016	9%	70%	2%	7%	14%	26%	44%	7%
January 30-February 1, 2016	10%	69%	2%	8%	16%	24%	45%	6%
One Year Ago	12%	65%	2%	10%	17%	28%	37%	6%

### Congress Approval

"Do you approve of the way the U.S. Congress is handling its job?"

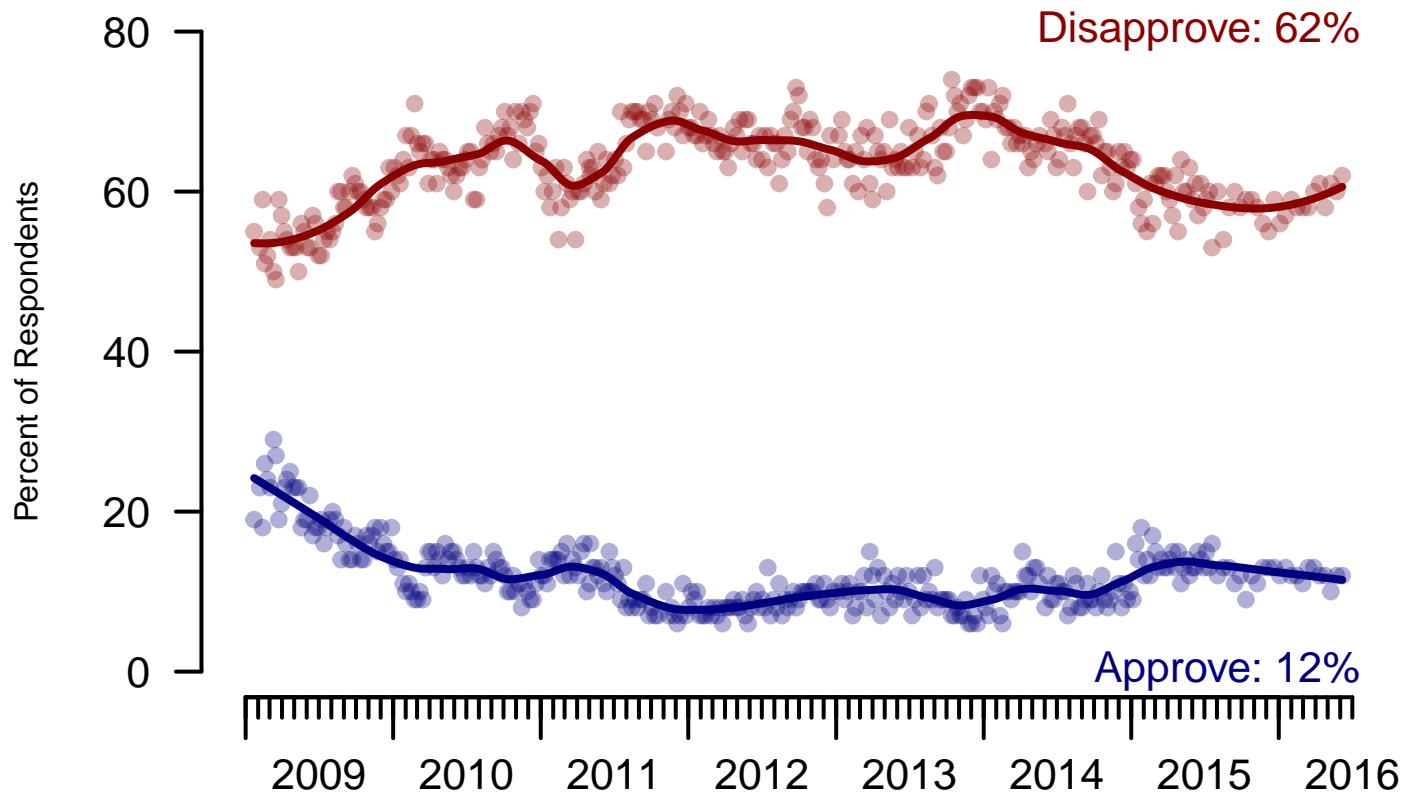


Figure 3: Congress Approval – All Adults

### Congress Approval

"Do you approve of the way the U.S. Congress is handling its job?"

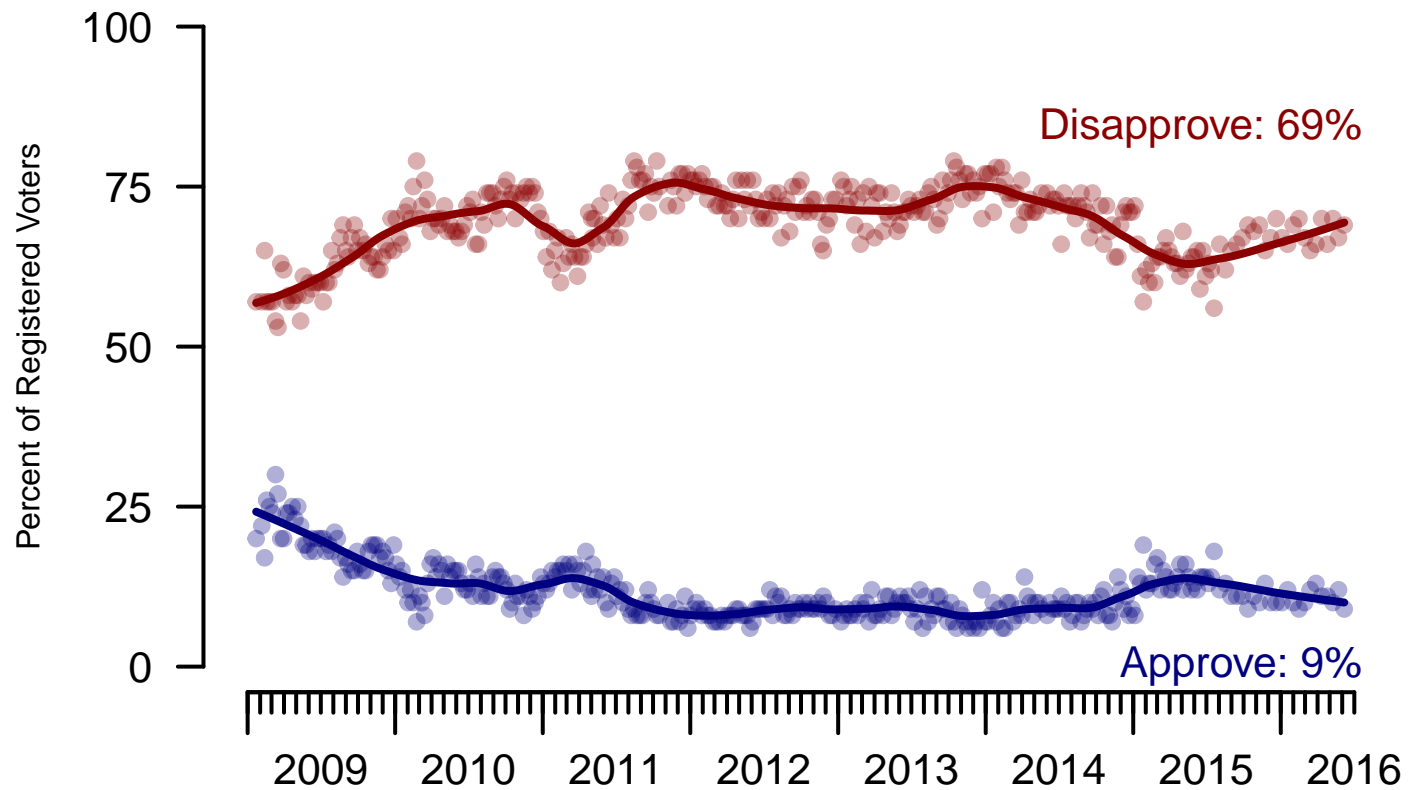


Figure 4: Congress Approval – Registered Voters



**4. Approval of U.S. Congress – This Week – All Adults**

Overall, do you approve or disapprove of the way that the United States Congress is handling its job?

	Age (4 category)					Race			Census Region			
	Total	Under 30	30-44	45-64	65+	White	Black	Hispanic	North-east	Mid-west	South	West
Strongly approve	4%	8%	6%	2%	0%	2%	12%	6%	2%	6%	4%	3%
Somewhat approve	8%	8%	13%	7%	6%	7%	9%	15%	7%	7%	11%	6%
Neither approve nor disapprove	18%	26%	21%	17%	10%	17%	20%	24%	14%	17%	20%	18%
Somewhat disapprove	24%	19%	22%	25%	28%	25%	22%	19%	25%	27%	23%	22%
Strongly disapprove	38%	25%	30%	41%	53%	42%	25%	26%	38%	39%	36%	42%
Not sure	8%	14%	7%	8%	3%	6%	12%	11%	13%	5%	6%	9%
Totals (Unweighted N)	100% (1,955)	100% (381)	100% (504)	100% (750)	100% (320)	100% (1,510)	100% (229)	100% (216)	100% (365)	100% (428)	100% (731)	100% (431)

	Party ID			Ideology			Gender		Family Income (3 category)			Prefer not to say	
	Total	Dem	Ind	Rep	Lib	Mod	Con	Male	Female	Under 50	50-100		100+
Strongly approve	4%	7%	2%	3%	4%	4%	3%	4%	4%	3%	4%	4%	6%
Somewhat approve	8%	10%	6%	8%	7%	9%	7%	7%	9%	8%	9%	6%	9%
Neither approve nor disapprove	18%	18%	17%	20%	13%	23%	16%	17%	19%	19%	18%	16%	18%
Somewhat disapprove	24%	21%	20%	33%	19%	20%	30%	23%	25%	24%	25%	27%	20%
Strongly disapprove	38%	35%	46%	31%	53%	32%	35%	43%	34%	36%	40%	44%	42%
Not sure	8%	9%	9%	5%	4%	11%	7%	6%	10%	11%	5%	3%	5%
Totals (Unweighted N)	100% (1,955)	100% (706)	100% (736)	100% (513)	100% (513)	100% (842)	100% (600)	100% (954)	100% (1,001)	100% (1,024)	100% (506)	100% (209)	100% (216)

**5. Direction of country – Historical**

Would you say things in this country today are...

	All Adults		
	Right Direction	Wrong Track	Not Sure
June 3-7, 2016	25%	63%	13%
May 20-24, 2016	27%	64%	9%
May 6-10, 2016	23%	66%	11%
April 23-25, 2016	27%	62%	11%
April 9-11, 2016	26%	62%	11%
March 26-28, 2016	26%	61%	13%
March 12-14, 2016	26%	63%	12%
February 27-29, 2016	25%	65%	9%
February 13-15, 2016	27%	63%	9%
January 30-February 1, 2016	27%	63%	10%
One Year Ago	29%	60%	11%

	Registered Voters		
	Right Direction	Wrong Track	Not Sure
June 3-7, 2016	25%	67%	8%
May 20-24, 2016	26%	67%	7%
May 6-10, 2016	23%	68%	8%
April 23-25, 2016	25%	66%	9%
April 9-11, 2016	26%	65%	8%
March 26-28, 2016	25%	64%	10%
March 12-14, 2016	25%	65%	10%
February 27-29, 2016	26%	68%	6%
February 13-15, 2016	28%	66%	6%
January 30-February 1, 2016	27%	66%	7%
One Year Ago	29%	59%	11%

## Direction of Country

"Would you say things in this country today are generally headed in the right direction or off on the wrong track?"

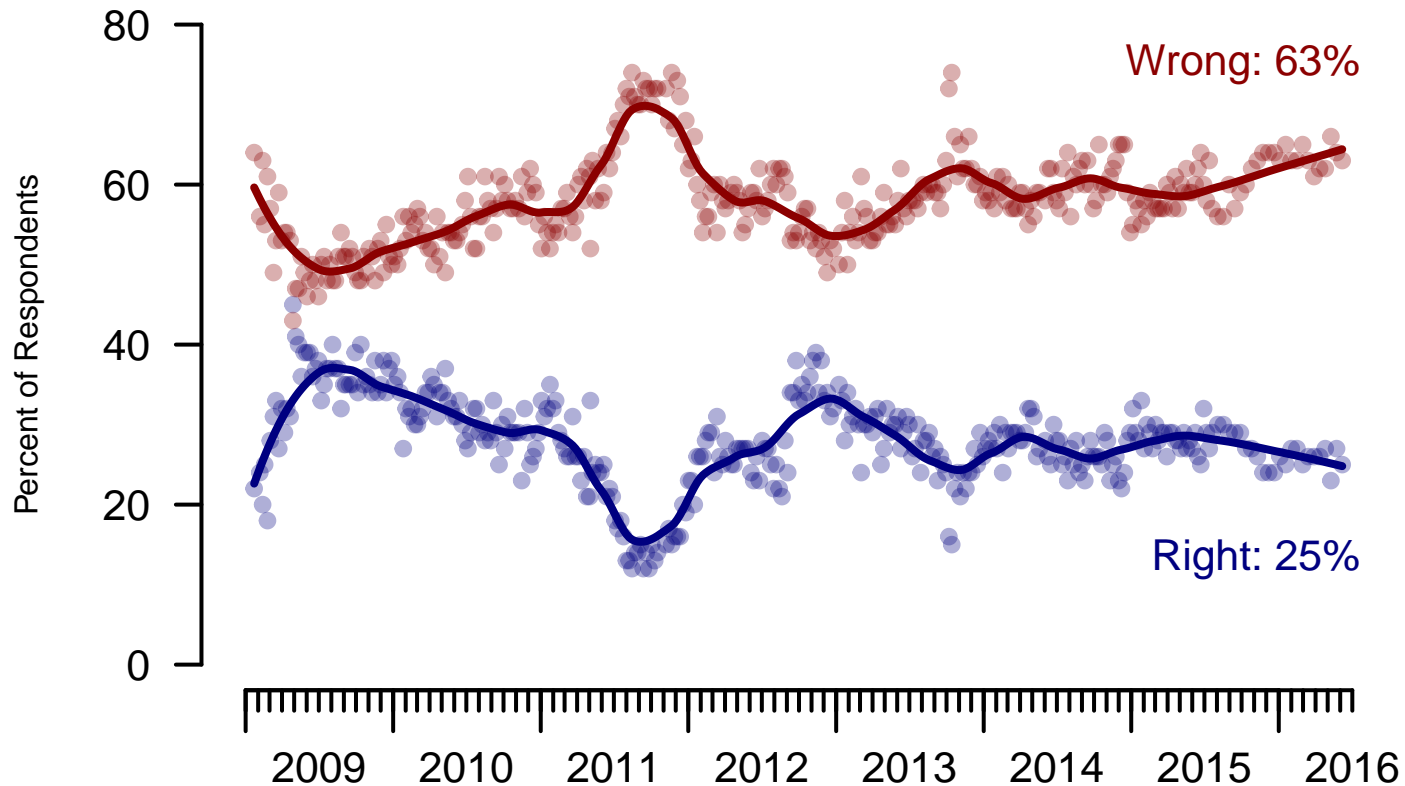


Figure 5: Direction of Country – All Adults

## Direction of Country

"Would you say things in this country today are generally headed in the right direction or off on the wrong track?"

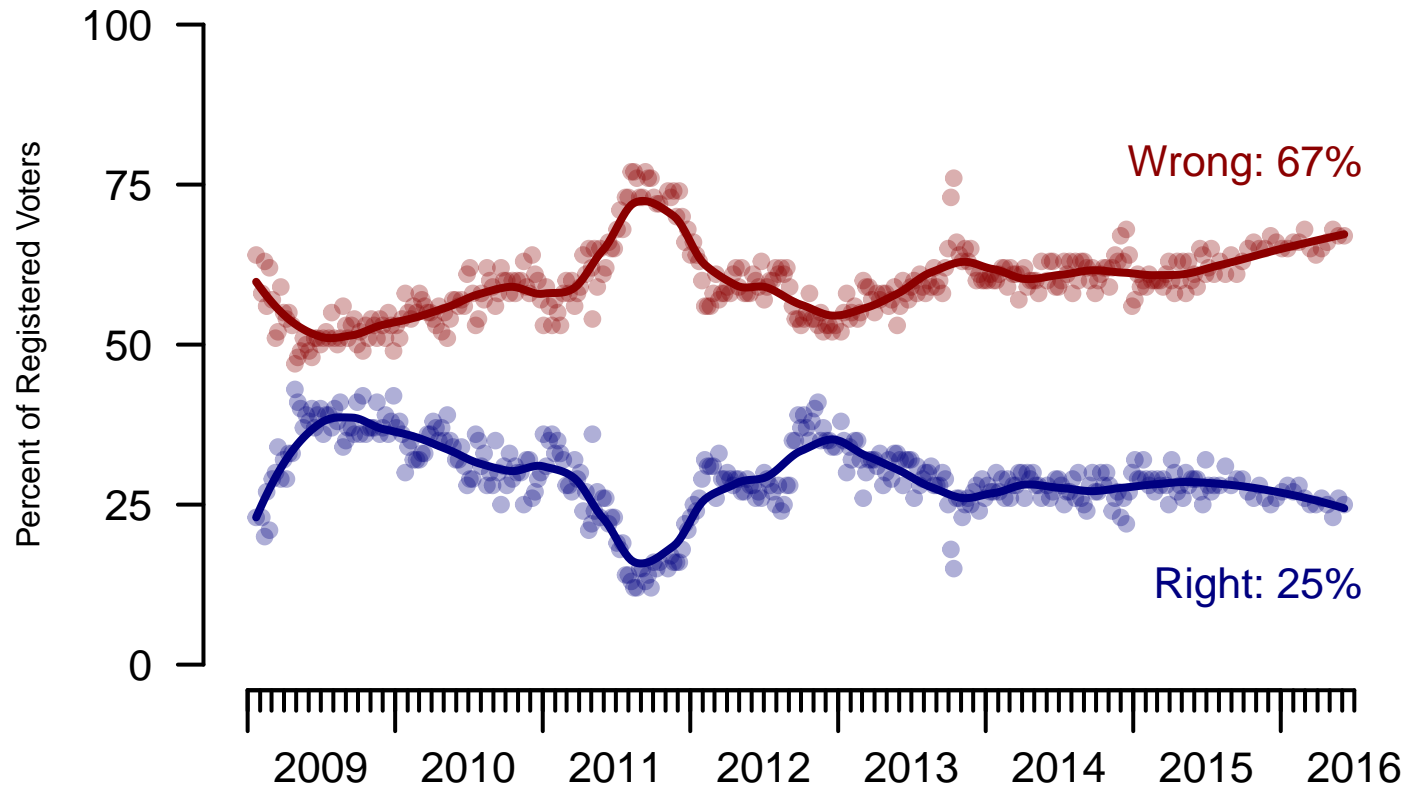


Figure 6: Direction of Country – Registered Voters

**6. Direction of Country – This Week – All Adults**

Would you say things in this country today are...

	Age (4 category)					Race			Census Region			
	Total	Under 30	30-44	45-64	65+	White	Black	Hispanic	North-east	Mid-west	South	West
Generally headed in the right direction	25%	27%	31%	23%	22%	21%	41%	34%	26%	19%	28%	24%
Off on the wrong track	63%	51%	53%	68%	71%	67%	44%	51%	55%	70%	64%	59%
Not sure	13%	22%	16%	9%	7%	12%	15%	15%	19%	11%	8%	17%
Totals (Unweighted N)	100% (2,000)	100% (391)	100% (521)	100% (764)	100% (324)	100% (1,538)	100% (241)	100% (221)	100% (376)	100% (436)	100% (750)	100% (438)

	Party ID			Ideology			Gender		Family Income (3 category)				
	Total	Dem	Ind	Rep	Lib	Mod	Con	Male	Female	Under 50	50-100	100+	Prefer not to say
Generally headed in the right direction	25%	45%	20%	7%	42%	27%	12%	24%	26%	23%	26%	33%	26%
Off on the wrong track	63%	40%	65%	88%	43%	59%	79%	63%	62%	64%	65%	55%	56%
Not sure	13%	15%	16%	5%	16%	14%	9%	13%	13%	13%	9%	12%	18%
Totals (Unweighted N)	100% (2,000)	100% (723)	100% (755)	100% (522)	100% (521)	100% (866)	100% (613)	100% (968)	100% (1,032)	100% (1,049)	100% (516)	100% (212)	100% (223)

<b>Sponsorship</b>	<i>The Economist</i>
<b>Fieldwork</b>	YouGov
<b>Interviewing Dates</b>	June 2 - 5, 2016
<b>Target population</b>	U.S. citizens, aged 18 and over.
<b>Sampling method</b>	Respondents were selected from YouGov's opt-in Internet panel using sample matching. A random sample (stratified by age, gender, race, education, and region) was selected from the 2010 American Community Study. Voter registration was imputed from the November 2010 Current Population Survey Registration and Voting Supplement. Religion, political interest, minor party identification, and non-placement on an ideology scale, were imputed from the 2008 Pew Religion in American Life Survey.
<b>Weighting</b>	The sample was weighted using propensity scores based on age, gender, race, education, news interest, voter registration, and non-placement on an ideology scale. The weights range from 0 to 6.18, with a mean of one and a standard deviation of 1.1.
<b>Number of respondents</b>	2000
<b>Margin of error</b>	± 3.2% (adjusted for weighting)
<b>Margin of error (Registered Voters)</b>	± 3.6% (adjusted for weighting)
<b>Survey mode</b>	Web-based interviews
<b>Full results</b>	Available online at <a href="http://today.yougov.com/news/categories/economist/">http://today.yougov.com/news/categories/economist/</a> .